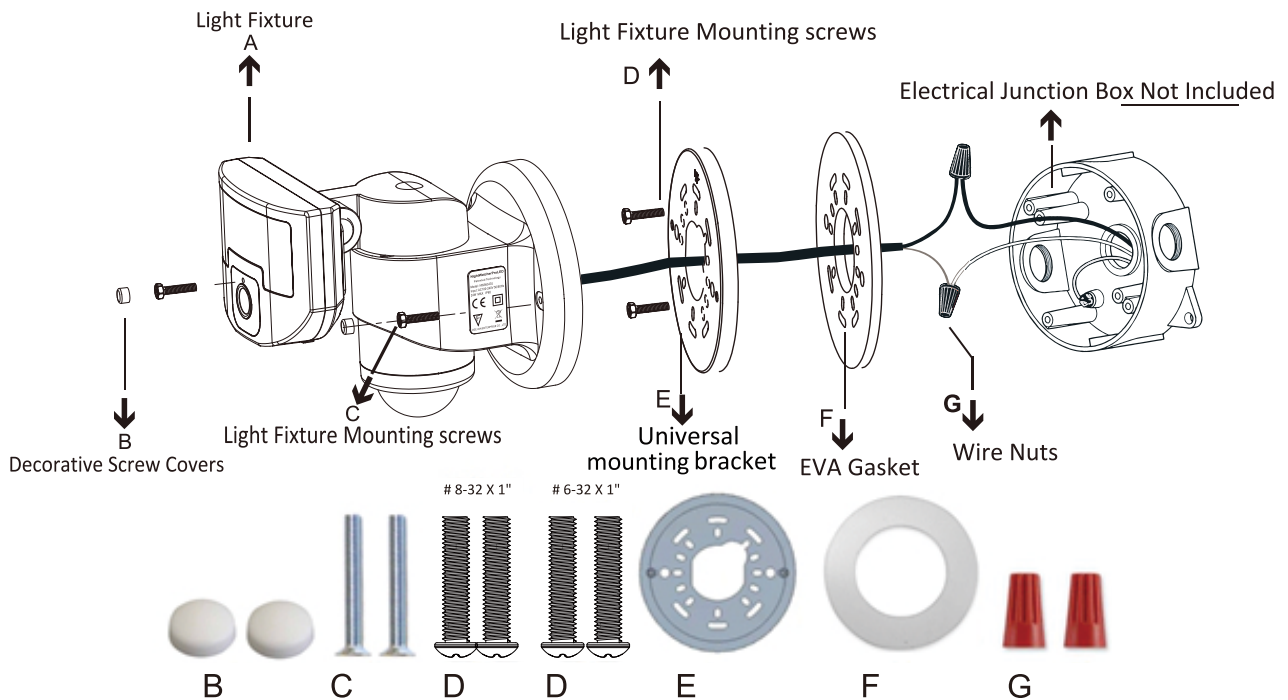
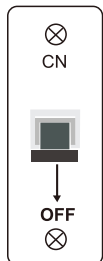


VSL95 Quick Installation Guide.



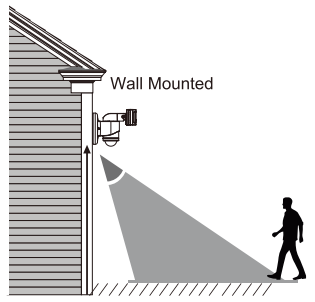
①

Switch off the power before installing the fixture



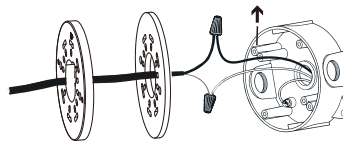
②

Select installation area and install between 6.6 ft / 2 meters - 10 ft / 3 meters above the ground



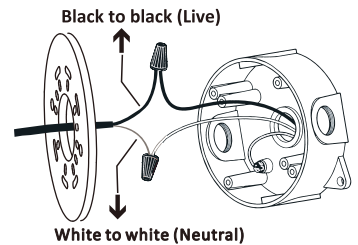
③

Feed the fixture black and white wires through the Universal mounting bracket and through the EVA gasket before connecting inside the junction box.



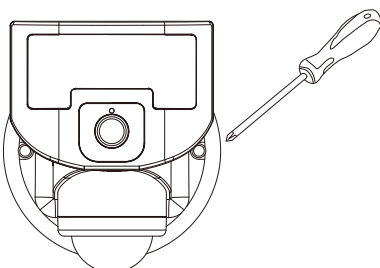
④

Use the Wire Nuts and connect the wires inside the junction box :



⑤

Align the light fixture with the base cover and ensure the backplate seal is in place before tightening the Light fixture to the basecover using the base cover screws and cover the screw heads with the decorative screw covers



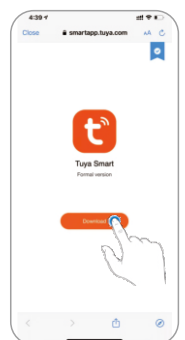
⑥

Installation Summary

The installation process involves the following steps;

1. After installation, power-up and switch the power on to the VSL95 fixture.
2. Scan the QR code appropriate to your phone to download the free "Tuya Smart" App to an iOS or Android device.
3. The VSL95 fixture unique ID is permanently connected to the Wi-Fi.
4. Once the VSL95 fixture is successfully connected, an acceptance sound will be heard when connected.
NB: If the connection is not successful, you can reset the VSL95 fixture:
 - Open the SD card cover and push the reset button in for 3 seconds an sound will indicate the reset has been successful and then repeat the Wi-Fi pairing process below.

- Tuya Smart(with Tuya logo): [QR code for downloading](#)



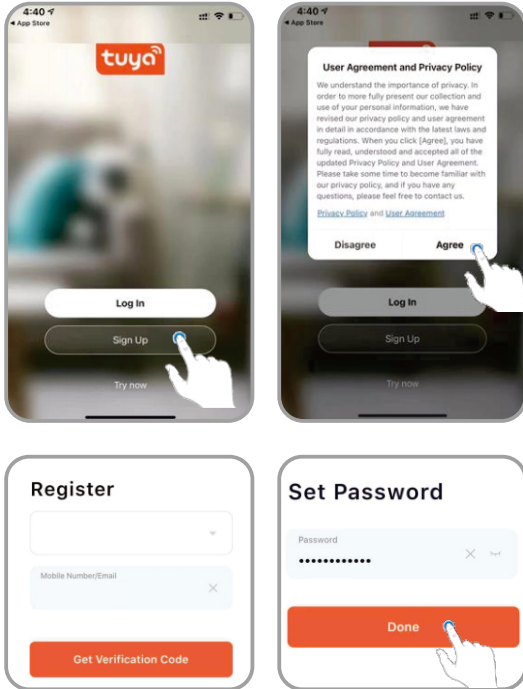
⑦

Ensure your phone or tablet is connected to the Wi-Fi network you intend to use for the VSL95 fixture.

1. Open the Tuya Smart App and follow the steps on your smartphone
2. First time in, select "Sign Up" and Register to obtain a verification code to create your unique account

Note: Should you already use the APP on your phone then select "Log in".

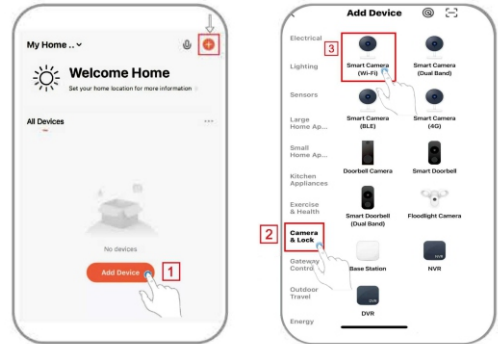
3. Input your verification code and Set your password, then select "Done".



⑧

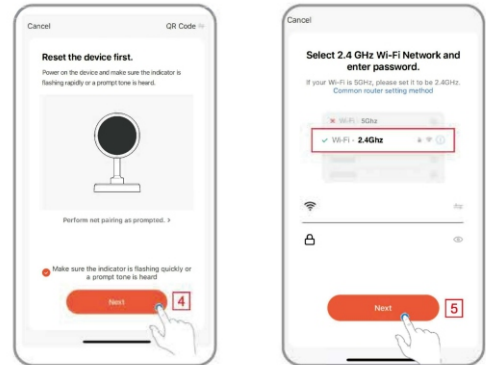
Add and connect your VSL95 to the Wi-Fi network following these easy 5 screenshots steps below:

- 1) Click on Add Device explained here below(only to add to existing devices click top right +)
- 2) Click on Camera & Lock
- 3) Click on Smart Camera(Wi - Fi)



- 4) After step 3 click next by following the APP screenshot guideline here below

- 5) Ensure to select 2.4 GHz and enter your Wi-Fi details and password and click next



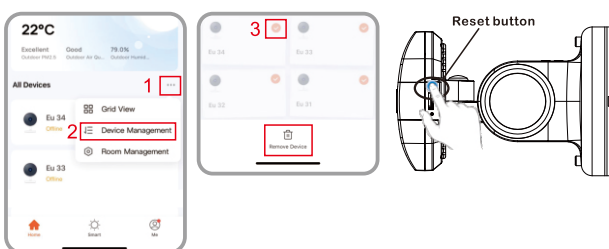
⑨

NB: If the connection or pairing process is not successful, you can reset the VSL95 fixture by following the below 2 options ;

Option 1. To delete the VSL95 fixture from the App screen , and then to repeat the Wi-Fi pairing process explained below on the screenshots with 3 easy steps .

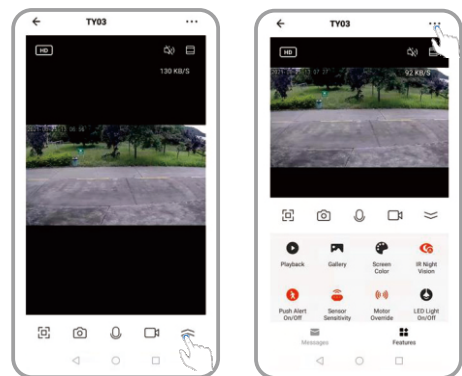
1. Click on menu bar
2. Click on Device Management
3. Drag the camera fixture to Remove Device

Option 2. To push the "Rotation Off" icon on the App screen for the LED head with the camera to be static in the center position of the fixture and then to open the SD memory card cover that is located at the bottom of the LED lamp head and push the reset button in for 3 seconds . A notification sound will indicate the reset has been successful, and then repeat the Wi-Fi pairing process below.



⑩

When the VSL95 fixture is successfully connected to the Wi-Fi network, the camera images from the installed NightWatcher can be viewed.



Click to open functions

