

Smart+ Products SPP155BDSS Kegerator Beer Dispenser Quick Installation Guide

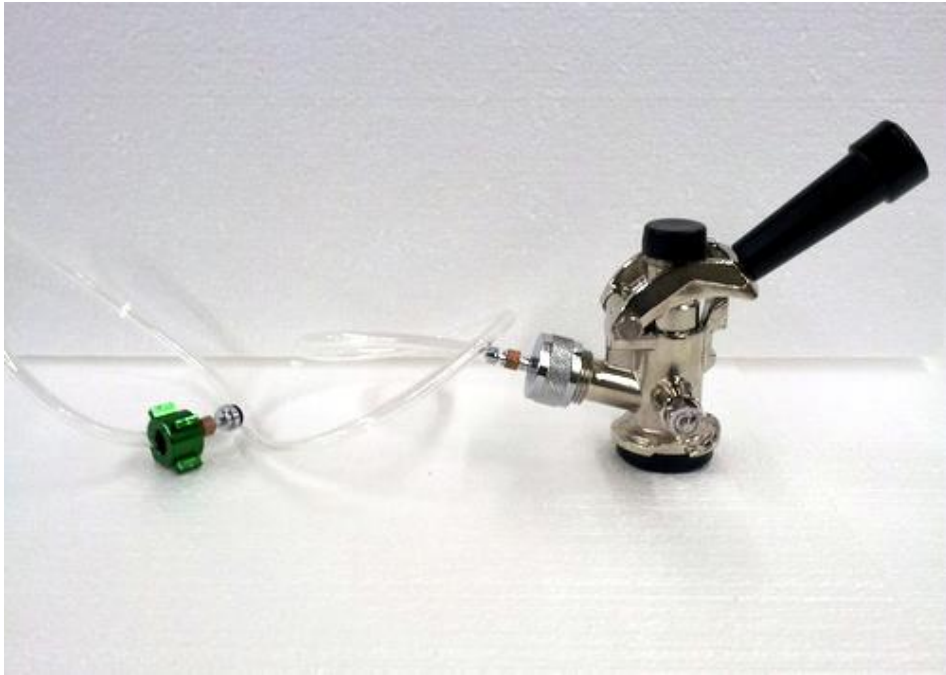
Please follow Installation Instructions in steps as shown

*Do not install any washers until shown as extra spare washers are included

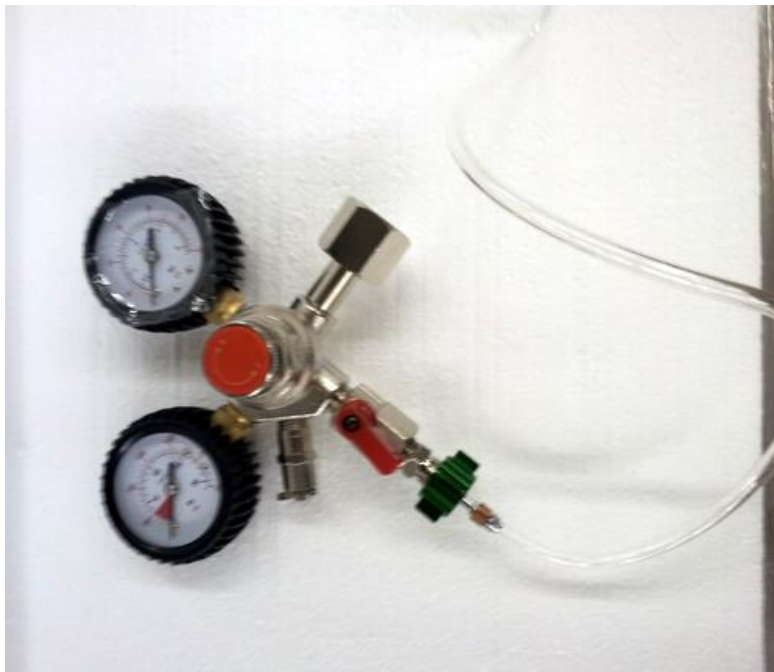
Step 1: Remove the Bigger Air Line Attachment



Step 2: Attach Provided Air Line with Nut and Hose



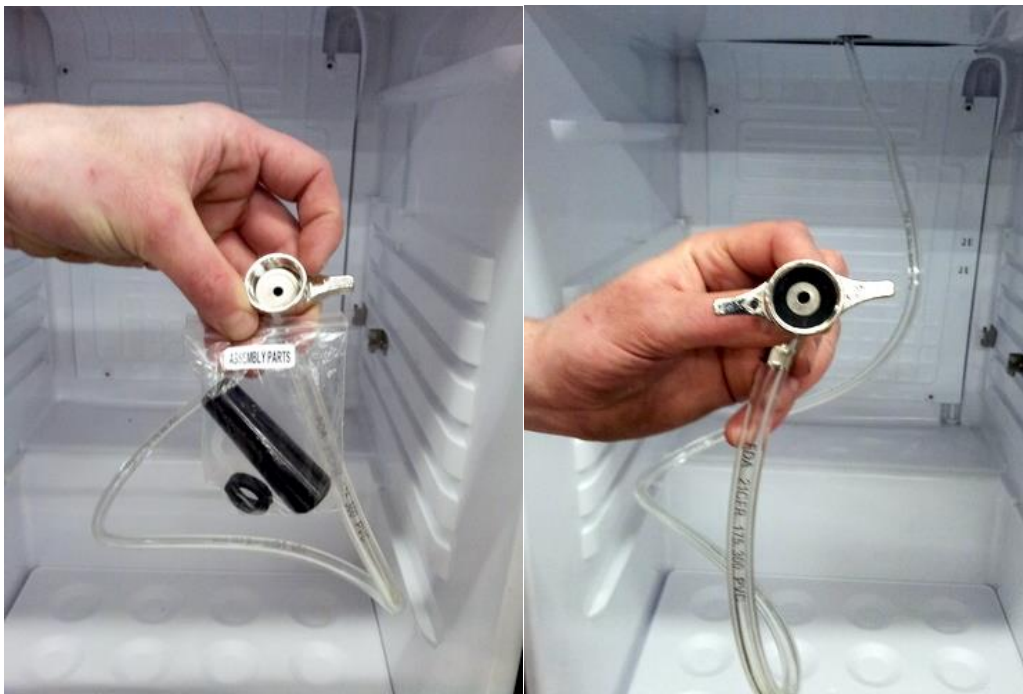
Step 3: Attach Green Wing Nut to Co2 Regulator



Step 4: Attach Co2 Regulator to Co2 Tank



Step 5: Insert Black Washer from Assembly Part Bag



Step 6: Thread onto Keg Tap



Purchase your Keg of choice and ENJOY!

**Any issues or questions do not hesitate to email us at
service@versonel.com!**